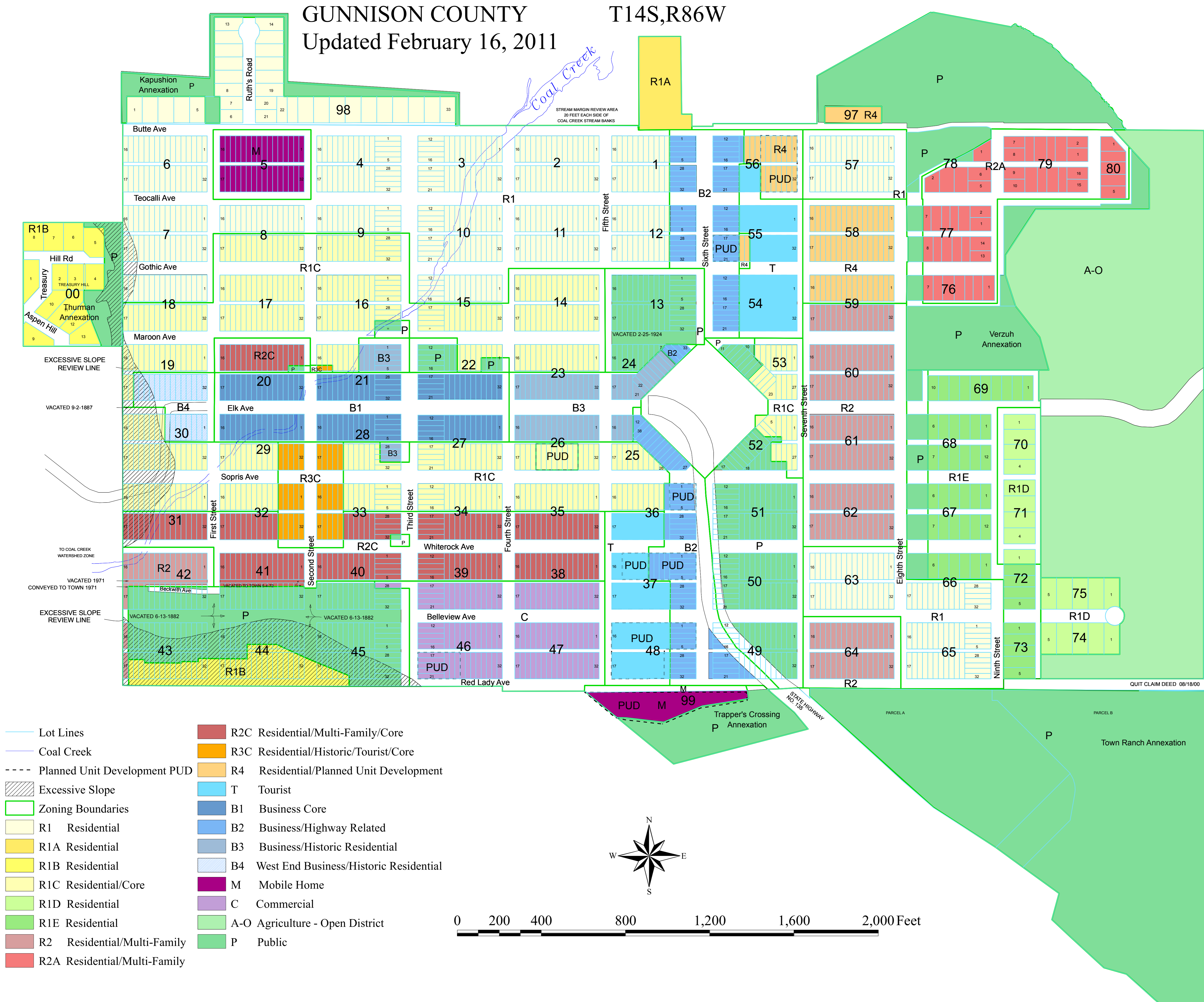


TOWN OF CRESTED BUTTE, COLORADO
 GUNNISON COUNTY T14S,R86W
 Updated February 16, 2011



ZONING AMENDMENTS INCORPORATED	
Ordinance Number	Block(s) & Lot(s)
NO.3 SERIES 1980	26 17 to 32
NO.8 SERIES 1980	55 22-23
NO.12 SERIES 1980	21 7,8
NO.6 SERIES 1981	21 6
NO.6 SERIES 1983	36 6,27
NO.13 SERIES 1984	21 14-16
NO.15 SERIES 1984	56 11
NO.17 SERIES 1985	DYER(S/2 SW/4 SEC35)
NO.4 SERIES 1989	57 1-32
NO.8 SERIES 1990	KAPUSHION R1A
NO.9 SERIES 1990	37 6-9
NO.20 SERIES 1990	TRAPPERS CROSSING
NO.24 SERIES 1990	40 17-27, 29-32
	41 17-32
	42 18-32
	43 1-15,18-32
	44 1-21,31,32
	45 1-32
NO.29 SERIES 1990	43 18-32
	44 4-11,17-32
	45 17-32
NO.30 SERIES 1990	56 1-7, 26-32
NO.8 SERIES 1991	THURMAN ANNEXATION
NO.3 SERIES 1992	41 17-32, alley
	42 18-32
NO.5 SERIES 1992	THURMAN ANNEXATION
NO.11 SERIES 1993	8-9 17-32
	14
	15 17-32
	16-17
	18 17-32
	19 1-24
	20 1-16
	21 1-4, 9-16
	22 1-11
	23 1-16
	25 17-26
	26-27 17-32
	28 17-27, 30-32
	29 17-32
NO.11 SERIES 1993 (CONTINUED)	30 9-32
	31-35
	36 7-16
	38-40 1-16
	41 1-16 & N9 17-32
	52 1-7, 24-27
NO.15 SERIES 1992	52 4-7
NO.4 SERIES 1993	53 9-18
	22 9-11
NO.16 SERIES 1993	21 1-4
NO.4 SERIES 1994	TRAPPERS CROSSING ANNEXATION (RED LADY ESTATES)
NO.7.8 SERIES 1995	KAPUSHION ANNEXATION
NO.20 SERIES 1995	52 6-7
NO.27-30 SERIES 1995	TOWN RANCH ANNEXATION
NO.4 SERIES 1996	TRAPPERS CROSSING ANNEXATION
NO.3 SERIES 1997	TOWN RANCH ANNEXATION
NO.18 SERIES 1998	24 39
NO.3 SERIES 1999	37 8-9
NO.4 SERIES 1999	20 1-3
NO.5 SERIES 1999	SW1/4 SW1/4 SEC35 T14S R86W
NO.4 SERIES 2000	52 23-25
NO.15 SERIES 2000	VERZUH ANNEXATION
NO.16 SERIES 2000	VERZUH ANNEXATION
NO.17 SERIES 2000	72 3-5
	73
NO.20 SERIES 2002	76 TRACTS 1-7
	77 TRACTS 1-14
	78 TRACTS 1-6
	79 TRACTS 1-16
	80 TRACTS 1-5
	25 12
NO.29 SERIES 2002	16 31, 32
NO.5 SERIES 2003	33 E50' 32
	40 N25' 21-23
NO.15 SERIES 2004	22 S62.5' 1-4
NO.3 SERIES 2005	56 8-10
NO.6 SERIES 2006	19 19-24
NO.3 SERIES 2009	19 19-32
NO.3 SERIES 2011	40 N25' 17-20
	N25' 24-27



Town of Crested Butte
 P.O. Box 49
 507 Maroon Ave.
 Crested Butte, Colorado 81224
 (970) 349-5338 (FAX 349-6626)
 email: hilarymays@crestedbutte-co.gov

NOTE: This map is not to be used for survey or legal description purposes