



December, 2011 Issue

## The Crested Butte Real Estate and Community Newsletter

Brought to you by Corey Dwan of Benson Sotheby's International Realty

Hi Everyone,

Thank you for giving me the opportunity to work with you this year and keep you updated on the Crested Butte real estate market. It has been an honor and a most valuable experience for me. I wish you abundance, happiness and a new year filled with hope. Happy Holidays and I hope to see you in Crested Butte this winter!

Watch for my newsletter at the beginning of January with the year-end totals. For now just enjoy some really good Crested Butte and national news as well as local upcoming events.

[Crested Butte Market Calendar of Events](#)

[USA Pro Cycling Challenge Coming Back to Crested Butte](#)

[Crested Butte Selected for the ISMF North American Ski Mountaineering Championships](#)

[Crested Butte Named 2nd Snowiest City in America](#)

[New Housing Starts Jumps 9.3%](#)

[Mortgage Rates Drop to Record Lows](#)

[Fed More Upbeat About Recovery](#)

[Luxury Real Estate Market See No Downturn](#)

Benson | Sotheby's  
INTERNATIONAL REALTY

### In This Issue:

- Calendar of Events
- USA Pro Cycling Challenge
- ISMF Championships
- CB 2nd Snowiest City
- Some Good National News
- 2011-12 Airline Schedule
- CBMR Environmental Efforts
- Resort Updates
- Oh Be Joyful Gallery

[Featured Listings](#)

[Global Listings](#)



329 Maroon Avenue, Crested Butte  
\$1,295,000



Unit 503 The Buttes, Mt. Crested Butte  
\$299,000



J202 San Moritz, Mt. Crested Butte  
\$275,000



116 Whiterock Ave, Crested Butte  
\$475,000

## 2011-2012 Winter Airline Schedule

Access to Crested Butte this winter is quick and easy thanks to direct, non-stop flights into the Gunnison/Crested Butte (GUC) Regional Airport from several major cities across the country. Crested Butte Mountain Resort (CBMR) and the Gunnison County Rural Transportation Association (RTA) have diligently negotiated air service for the 2011-2012 winter season from three major carriers: American Airlines, Continental Airlines and United Airlines, with flights from Dallas (DFW), Houston (IAH) and Denver (DEN). The full direct service schedule begins December 15th & 16th. Local and discounted fares have been announced. Please be sure to take advantage of these discounted fares. The more people use our direct flights, the better it is for our overall air service program. The first is a holiday fare sale through American Airlines and the second is the standard United local<sup>TM</sup> fare which has been extended through December 2012. More detailed information about both deals is posted at [www.flygcb.com](http://www.flygcb.com).

✈ American Airlines is offering holiday airfares for travel originating from the Gunnison-Crested Butte Regional Airport (GUC) starting at \$198\* per round trip (\$99 each way based on a required round-trip, economy-class purchase). Required dates of travel from GUC are Dec. 15 - 22, 2011, with return to GUC from Dec. 31, 2011 - Jan. 7, 2012. Tickets must be purchased at least 14 days prior to departure, and fare examples do not include taxes and fees.

✈ United Airlines, which flies into GUC year-round, continues to offer a round-trip local<sup>TM</sup> fare for \$161.40 (must originate in GUC). A one-way only fare originating in GUC is \$109.70. Both are subject to availability and valid for travel through Dec. 13, 2012. There is a minimum one-night stay and maximum 30-night stay, and tickets must be booked locally at least one day in advance through Crested Butte Vacations, 349-2287, or at the United desk at the airport, which is open 10 a.m. - 3:30 p.m. except when a flight is being serviced. You must be a Colorado resident, and Colorado residence identification may be required at check-in. There is a \$10 ticketing fee to book the fare through Crested Butte Vacations.

## CBMR Environmental Efforts

CBMR has made great strides in becoming a "greener" resort. In 2010, CBMR joined the Colorado Industrial Energy Challenge (CIEC), as one of 13 charter members in the state. By signing on, the resort committed to reducing energy consumption by two percent each year for five consecutive years, using 2008 as the base year. In June of 2011, CBMR won the Excellence in Energy Efficiency award from Governor John Hickenlooper and the Governor's Energy Office for reducing energy use by 18.9 percent in the first year. Mountain Operations crews and all CBMR staff are very committed to this endeavor and it shows in everything they do, from making snow to turning off lights and turning down the heat at night.

## Crested Butte Mountain Resort Updates

✈ **Zipline Tour** - The new Crested Butte Zipline Tour opened June 28 and is now up and running for the winter season. The guided tour includes five zip lines and three suspended bridges that have been uniquely adapted to accommodate winter operations. The Crested Butte Zipline Tour is available during the summer, fall and winter seasons and has been welcomed with resounding success. To date, we've already had 3,225 zippers enjoy the tour and look forward to offering it for our winter guests as well for \$59 per person. The winter operations will begin at the yurt located at the base of the zipline and right in front of the kids' learning area by the Whetstone building. At the yurt, guests will get fitted for their harnesses where the necessary safety instructions explained. Each tour will then make their way down to the Peachtree lift for a ride up to the top of the zipline and enjoy the approximate 2-hour zipping experience. We hope you enjoy this added amenity to the resort.

✈ **Paradise Warming House** - Paradise was one of our biggest endeavors this summer season and will look much different when it opens for the season in the coming days. The cafeteria line has drastically changed, as the beverage island in the center has been removed and will now be a salad bar, offering healthier options for our guests in this location. Sections of the exterior have been resided and we are in the process of updating all of the signage to better fit our brand here at CBMR and give Paradise a



26 Whetstone Road, Mt. Crested Butte  
\$994,000



5 Moon Ridge Lane, Crested Butte  
\$3,450,000




49 Cinnamon Mtn Road, Mt. Crested Butte  
\$1,550,000



309 Third Street, Crested Butte  
\$899,000



897 Rio Grande Lane, Creede  
\$1,700,000

 Quick Search Helpful Links

[Mt. Crested Butte Homes](#)

more comprehensive updated feel. We hope you enjoy the changes done to date. Also, the sewer lines in an around Paradise have been addressed. We replace 3,000 feet of pipe line, so we have our fingers crossed that the plaguing odor has finally been mitigated at the base of the Paradise Lift.

⌘ Ten Peaks ⌘“ Camp 4 no longer wished to utilize the location at the top of Painter Boy, worry not⌘ they are still in their same location in Mountaineer Square. So CBMR has taken over the small building at the top of Painter Boy, given it a little paint job, with hopes of future capital dollars being designated to this beautiful location, which houses some of the best views in the valley. Ten Peaks is the new name and we hope to capitalize on the beach front and will continue to offer guests, coffee, pre-made sandwiches, soups and a full service bar.

⌘ Treasury Building ⌘“ We are currently in a multi-phase project with Treasury to update the building and modernize the look. As you may remember we worked extensively on the interior last year and this year we decided to start focusing on the exterior. We have installed new doors on both sides of the building, which also have an automatic door component for our guests, providing easier access and a more welcoming environment. In addition, we have replaced the sidewalk on the ⌘Elevation side of the building⌘ with new pavers. The plan is to continue the exterior improvements next year.

- [Mt. Crested Butte Condos](#)
- [Mt. Crested Butte Land](#)
- [Crested Butte Homes](#)
- [Crested Butte Condos](#)
- [Crested Butte Land](#)
- [Rural Crested Butte Homes](#)
- [Rural Crested Butte Condos](#)
- [Rural Crested Butte Land](#)
- [Crested Butte South Homes](#)
- [Crested Butte South Condos](#)
- [Crested Butte South Land](#)
- [Gunnison Area Homes](#)
- [Gunnison Area Condos](#)
- [Gunnison Area Land](#)
- [Global Real Estate](#)

- [Mountain Bike Trail Report](#)
- [Mt. Crested Butte Snow Report](#)
- [Mt. Crested Butte Ski Trail Report](#)
- [Crested Butte Weather Report](#)

[Sign Up for my Newsletter](#)

[Click Here for my last Newsletter](#)



Please Visit My Favorite Gallery in Crested Butte - Oh Be Joyful Gallery



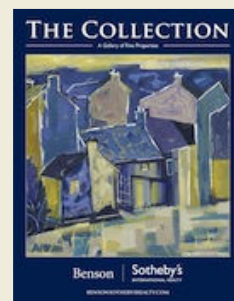
Shaun Home - Red Buildings



Shaun Home - Aspens and Lupines



Shaun Home - Tamale View



**Thanks for all your referrals!**

I succeed when people like you refer me to their family, friends, neighbors and colleagues. It's the best kind of feedback I can receive. So thanks for continuing to pass along this newsletter to all.



Corey Dwan  
Benson Sotheby's International Realty  
433 Sixth Street  
Crested Butte, CO 81224  
970-596-3219 Cell  
970-797-1810 Fax  
[Corey.Dwan@SothebysRealty.com](mailto:Corey.Dwan@SothebysRealty.com)  
[www.CrestedButteForSale.com](http://www.CrestedButteForSale.com)  
[www.SothebysGlobalRealEstate.com](http://www.SothebysGlobalRealEstate.com)

Thanks for reading! If you'd like to tell me what you think about this newsletter, or if you're thinking of buying or selling real estate, please do get in touch.